



Valve Regulated Lead Acid Battery

Maintenance-Free Sealed Lead Acid Battery.

Absorbent Glass Mat (AGM) technology for efficient gas recombination of up to 99%.

Design for Standby Power Applications

【Design Life】

Up to 10 Years in Standby Service at 25°C

Eurobat (20°C) : 10-12 years, Long Life

【Operating Temperature Range】

Nominal Operating Temperature : 25°C (77°F)

Discharge : -15°C ~ 50°C (5°F~122°F)

Charge: -15°C ~ 40°C (5°F~104°F)

Storage: -15°C ~ 40°C (5°F~104°F)

【Float Charging Voltage】

13.5 ~ 13.8 VDC/Unit at 25°C (77°F)

【Equalization Charging Voltage】

14.4 ~ 15.0 VDC/Unit at 25°C (77°F)

【Self Discharge】

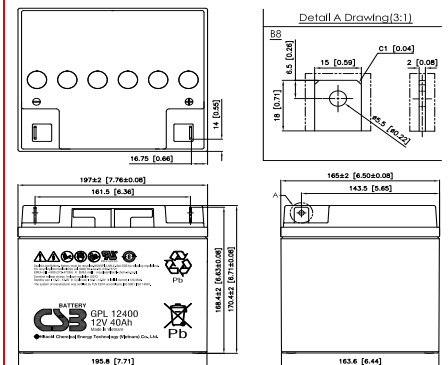
Less than 10% after 90 days, can be stored up to 6 months at 25°C (77°F);

Fully recharging is required before usage, and charged sooner if stored at higher temperature than 25°C (77°F).

Specification

Design according with IEC 61056-1/2: 2012

Nominal Voltage	12V (6 cells per unit)		
Nominal Capacity	40 Ah @20hr-rate to 1.75V per cell @25°C (77°F)		
Weight	Approx. 12.74 Kg (28.08 lbs)		
Maximum Discharge Current	400A (5sec)		
Internal Resistance	Approx. 8.5mΩ		
Short Circuit Current	1186A		
Maximum Charge Current	12.00A		
Terminal type	B8 terminal to accept M5 bolt		
Terminal Breaking Torque	59.0 Kgf-cm/ 51.0 lbf-in/ 5.73 N-m		
Container Material	ABS (UL 94-HB) & Flame Retardant (94-V0) available upon request		
Dimensions	Length (L)	197.0±2.0 mm	7.76±0.08 inch
	Width (W)	165.0±2.0 mm	6.50±0.08 inch
	Container Height (h)	170.4±2.0 mm	6.71±0.08 inch
	Overall Height (H)	170.4±2.0 mm	6.71±0.08 inch



Constant Current Discharge Characteristics Unit: A (25°C, 77°F)

F.V/Time	5MIN	10MIN	15MIN	30MIN	60MIN	90MIN	2HR	3HR	5HR	8HR	10HR	20HR
1.60V	166	111	83.7	49.0	28.6	20.8	16.5	11.9	7.68	5.12	4.21	2.25
1.67V	153	107	82.0	48.5	28.4	20.7	16.4	11.8	7.65	5.09	4.18	2.24
1.70V	144	103	80.7	48.1	28.2	20.7	16.3	11.7	7.62	5.08	4.17	2.24
1.75V	130	96.2	77.5	46.9	27.8	20.5	16.2	11.6	7.56	5.04	4.14	2.22
1.80V	117	87.3	71.0	44.8	27.0	20.0	15.9	11.4	7.41	4.95	4.06	2.18
1.85V	94.2	78.1	61.8	41.3	25.4	19.1	15.1	10.9	7.09	4.74	3.90	2.10

Constant Power Discharge Characteristics Unit: W (25°C, 77°F)

F.V/Time	5MIN	10MIN	15MIN	30MIN	60MIN	90MIN	2HR	3HR	5HR	8HR	10HR	20HR
1.60V	1661	1162	905	548	326	240	191	138	91.1	60.8	50.0	26.8
1.67V	1552	1122	888	544	324	239	190	137	90.8	60.6	49.8	26.7
1.70V	1497	1095	874	540	323	238	189	136	90.6	60.5	49.7	26.6
1.75V	1404	1038	837	530	319	237	188	135	90.0	60.1	49.4	26.5
1.80V	1226	967	776	511	311	233	185	134	88.5	59.1	48.5	26.1
1.85V	1011	853	689	478	295	222	177	129	85.1	56.8	46.7	25.1

Please refer to the official site for the latest rating confirmation. URL: www.csb-battery.com

Issued: 190522

Sales Offices

日立化成能源科技股份有限公司
Hitachi Chemical Energy Technology Co., Ltd.

BUSINESS HEADQUARTERS

Tel: +886-2-2880-5600

Fax: +886-2-2888-3300

USA OFFICE

Tel: +1-817-244-7777 / 1-(800)3-CSB-USA (272872)

Fax: +1-817-244-4445

SHENZHEN OFFICE (CHINA)

Tel: +86-755-8831-6488, 8831-6775

Fax: +86-755-8831-6075

EUROPE (EMEA) OFFICE

Tel: +31(0)180-418-140

Fax: +31(0)180-418-327

SHANGHAI OFFICE (CHINA)

Tel: +86-21-5046-1622, 5046-0833

Fax: +86-21-5046-1046

TAIPEI OFFICE

Tel: +886-2-2880-5600

Fax: +866-2-2888-3300

BEIJING OFFICE (CHINA)

Tel: +86-10-5820-5336, 5820-5338

Fax: +86-10-5820-3053

Recognized under UL 1989,
and certified by ISO 9001, 14001.

