



**Valve Regulated Lead Acid Battery**

Maintenance-Free Sealed Lead Acid Battery.

Absorbent Glass Mat (AGM) technology for efficient gas recombination of up to 99%.

**Design for Standby Power Applications**

**【Design Life】**

Up to 10 Years in Standby Service at 25°C

Eurobat (20°C) : 10-12 years, Long Life

**【Operating Temperature Range】**

Nominal Operating Temperature : 25°C (77°F)

Discharge : -15°C ~ 50°C (5°F~122°F)

Charge: -15°C ~ 40°C (5°F~104°F)

Storage: -15°C ~ 40°C (5°F~104°F)

**【Float Charging Voltage】**

13.5 ~ 13.8 VDC/Unit at 25°C (77°F)

**【Equalization Charging Voltage】**

14.4 ~ 15.0 VDC/Unit at 25°C (77°F)

**【Self Discharge】**

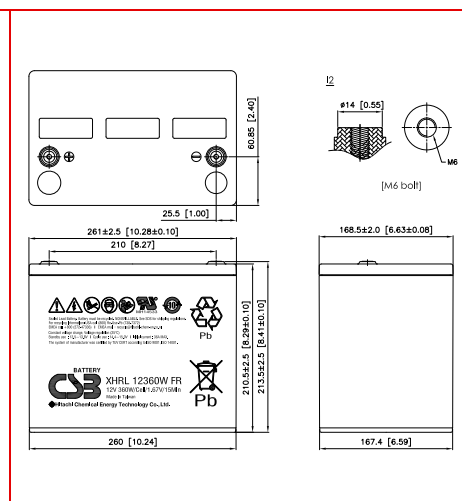
Less than 10% after 90 days, can be stored up to 6 months at 25°C (77°F);

Fully recharging is required before usage, and charged sooner if stored at higher temperature than 25°C (77°F).

**Specification**

Design according with IEC 60896-21/22:2004

Nominal Voltage	12V (6 cells per unit)		
Nominal Capacity	360W @15min-rate to 1.67V per cell @25°C (77°F)		
Weight	Approx. 28.30 Kg (62.37 lbs)		
Maximum Discharge Current	800A (5sec)		
Internal Resistance	Approx. 3.10 mΩ		
Short Circuit Current	2551A		
Maximum Charge Current	36A		
Terminal types	I2 thread lead alloy terminal to accept M6 bolt		
Terminal breaking Torque	138.6 Kgf-cm / 120.3 Lbf-in / 13.58 N-m		
Container Material	Flame Retardant Polypropylene (UL 94-V0)		
Dimensions	Length (L)	261.0±2.5 mm	10.28±0.10 inch
	Width (W)	168.5±2.0 mm	6.63±0.08 inch
	Container Height (h)	210.5±2.5 mm	8.29±0.10 inch
	Overall Height (H)	213.5±2.5 mm	8.41±0.10 inch



**Constant Current Discharge Characteristics Unit: A (25°C, 77°F)**

F.V/Time	2MIN	4MIN	5MIN	6MIN	8MIN	10MIN	15MIN	20MIN	30MIN	45MIN	60MIN	90MIN
1.60V	577	468	422	387	331	287	207	164	117	83.7	65.8	46.9
1.67V	524	421	386	360	308	272	200	159	116	82.8	65.2	46.6
1.70V	490	400	370	342	296	262	195	156	115	82.1	64.8	46.4
1.75V	438	364	334	310	275	240	185	150	111	80.3	63.7	45.9
1.80V	366	316	295	278	243	215	170	140	106	77.1	61.5	44.7
1.85V	294	272	254	235	208	189	150	126	97.8	71.6	57.4	42.0

**Constant Power Discharge Characteristics Unit: W (25°C, 77°F)**

F.V/Time	2MIN	4MIN	5MIN	6MIN	8MIN	10MIN	15MIN	20MIN	30MIN	45MIN	60MIN	90MIN
1.60V	5772	4683	4324	3949	3419	3001	2295	1836	1340	966	766	552
1.67V	5399	4381	4003	3701	3270	2864	2236	1799	1324	957	760	550
1.70V	5100	4198	3844	3577	3170	2783	2198	1774	1312	951	757	548
1.75V	4586	3834	3562	3355	2943	2617	2097	1708	1280	933	746	544
1.80V	4067	3454	3277	3047	2671	2411	1936	1601	1225	900	723	531
1.85V	3329	3038	2803	2625	2366	2184	1726	1453	1141	843	680	503

Please refer to the official site for the latest rating confirmation. URL: [www.csb-battery.com](http://www.csb-battery.com)

Issued: 180205

**Sales Offices**

**日立化成能源科技股份有限公司**  
Hitachi Chemical Energy Technology Co., Ltd.

Recognized under UL 1989,  
and certified by ISO 9001, 14001.



**BUSINESS HEADQUARTERS**

Tel: +886-2-2880-5600

Fax: +886-2-2888-3300

**USA OFFICE**

Tel: +1-817-244-7777 / 1-(800)3-CSB-USA (272872)

Fax: +1-817-244-4445

**SHENZHEN OFFICE (CHINA)**

Tel: +86-755-8831-6488, 8831-6775

Fax: +86-755-8831-6075

**EUROPE (EMEA) OFFICE**

Tel: +31(0)180-418-140

Fax: +31(0)180-418-327

**SHANGHAI OFFICE (CHINA)**

Tel: +86-21-5046-1622, 5046-0833

Fax: +86-21-5046-1046

**TAIPEI OFFICE**

Tel: +886-2-2880-5600

Fax: +866-2-2888-3300

**BEIJING OFFICE (CHINA)**

Tel: +86-10-5820-5336, 5820-5338

Fax: +86-10-5820-3053